



## Turning Point 2008 (Used within PowerPoint)

1. Plug the TurningPoint RF Receiver into a USB port on the computer. If you do not have Turning Point installed, use the Install CD in the Kit.
2. Click the Turning Point 2008 icon on the desktop to open Turning Point.
3. Click on the Turning Point tab in the PowerPoint Menu.
4. To **Add a new response slide**, choose Insert Slide and select Vertical or one of the other types. Then enter the question text and answer texts for your possible answers.



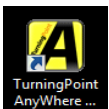
To **Convert an existing PowerPoint Question Slide** the question needs to be in the Title area and the responses as bullet points. Then Select Insert Object > Charts > Vertical (or other)



5. Start your Slide show. When you get to a question slide, the Polling Control bar will show in the upper right of your window and polling opens. When you proceed to the next slide, the results will be displayed.

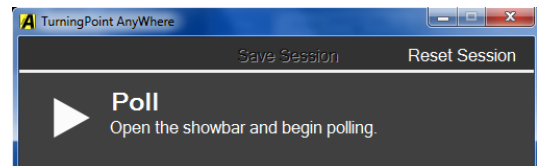


6. Use the Reset tool to reset a slide, all slides, or your entire session. You must do this in order to clear results of previous responses for each new audience or use.
7. Be sure to **RETURN the Turning Point RF Receiver** to the Static Free bag and return it to the Kit when done with your use of Turning Point.
8. Use the HELP tool when you want more information on how to use Turning Point.



## Turning Point AnyWhere (Used with any program)

1. Plug the Turning Point RF Receiver into a USB port on the computer. If you do not have TurningPoint AnyWhere installed, use the Install CD in the Kit.
2. Start PowerPoint or any or no applications. You can use this with just oral questions.
3. Click the Turning Point AnyWhere icon on the desktop to open Turning Point.



4. Click Poll and then click the Start button.



5. Click Charts to display your results.

6. Be sure to **RETURN the Turning Point RF Receiver** to the Static Free bag and return it to the Kit when done with your use of Turning Point.

7. Use the HELP tool when you want more information on how to use Turning Point.

