

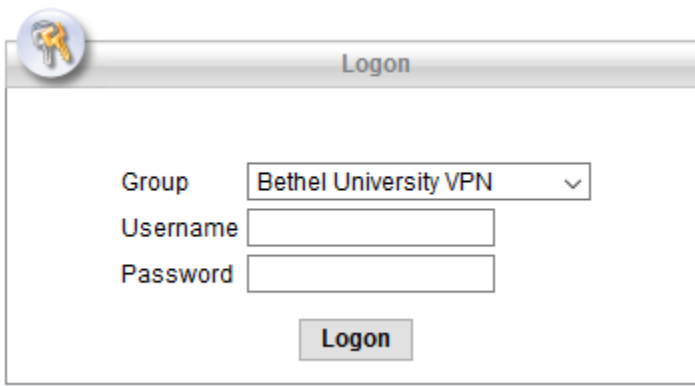
Installing VPN on Windows 10

Summary

VPN (Virtual Private Network) is used when you are off campus but need to access resources that require an on-campus network connection (such as Argos, Banner, and the Q Drive). This article gives instructions for installing VPN on Windows 10.

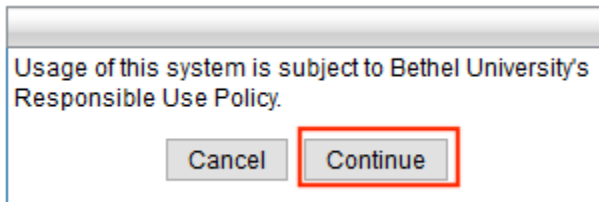
Installing VPN

1. If you are ON campus, connect to Ethernet and navigate to <https://vpn-setup.bethel.edu/> in a browser.
2. If you are OFF campus, navigate to <https://vpn.bethel.edu/> in a browser.
3. Log in using your Bethel Username and Password.



A screenshot of a web-based logon dialog box. The title bar reads "Logon" and features a key icon. The form contains three input fields: "Group" with a dropdown menu showing "Bethel University VPN", "Username", and "Password". A "Logon" button is positioned below the fields.

4. Click **Continue** to agree to the Acceptable Use Policy.

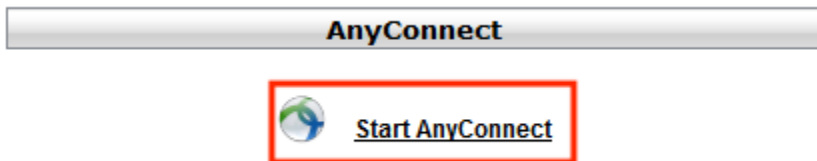


A screenshot of a dialog box with the text "Usage of this system is subject to Bethel University's Responsible Use Policy." Below the text are two buttons: "Cancel" and "Continue". The "Continue" button is highlighted with a red rectangular border.

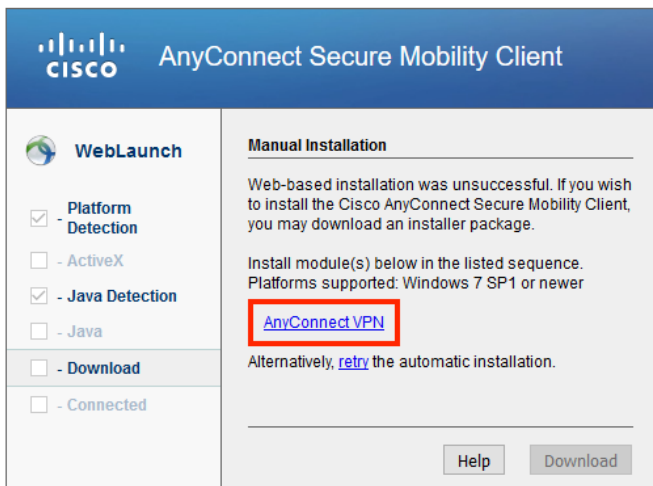
5. Select **AnyConnect** from the bar at the left hand side of the screen.



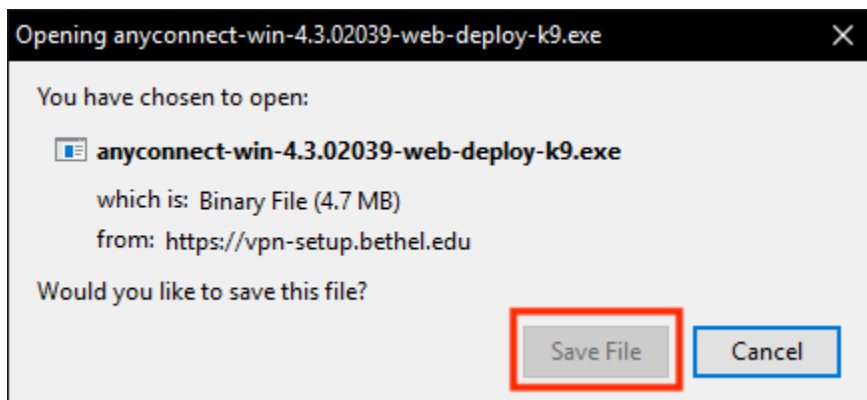
6. Click **Start AnyConnect**.



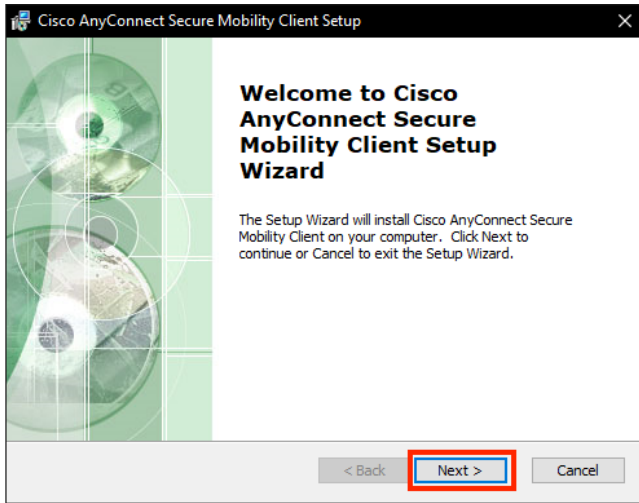
7. The Cisco AnyConnect VPN Secure Mobility Client will go through a series of tests. Perform a manual installation by clicking on the **Any Connect VPN** link.



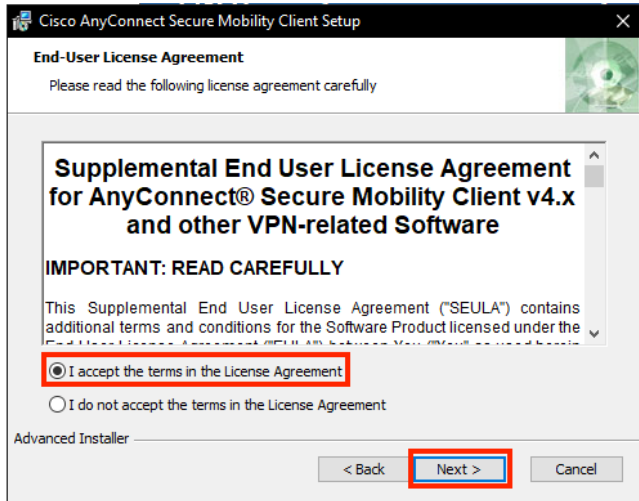
8. Another window will appear. Click **Save File**.



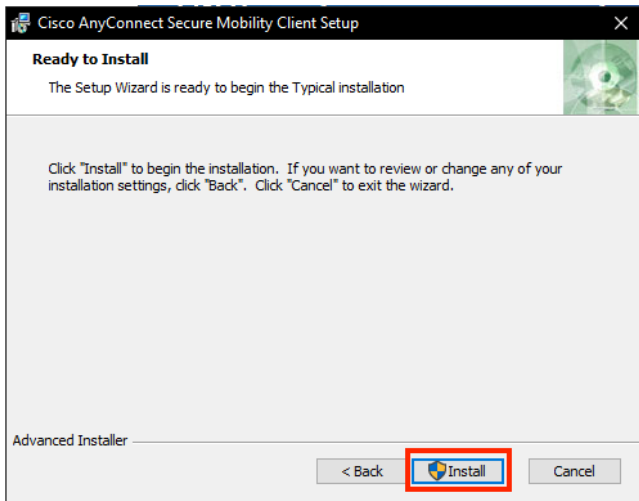
9. Follow the installer prompts. Click **Next**.



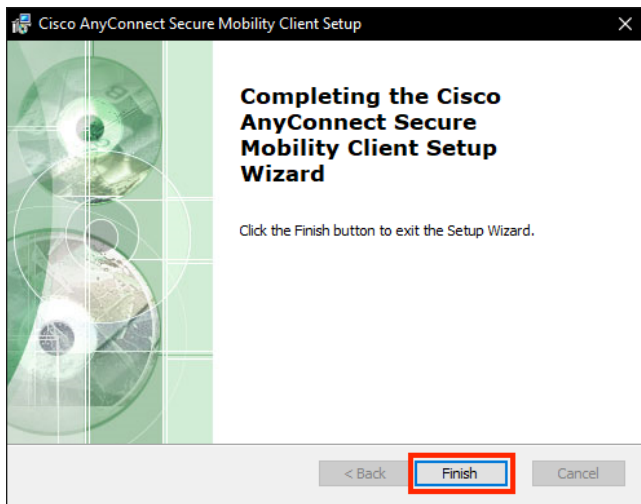
10.



11.



12.



13. You have successfully installed the Cisco AnyConnect VPN Client.

Please note that if you are installing VPN on Bethel campus, you will not successfully connect to VPN until your computer is off the Bethel network.

Additional VPN Information

For assistance in using VPN, please reference [this Article](#)