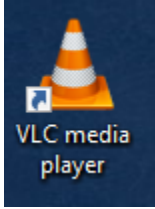


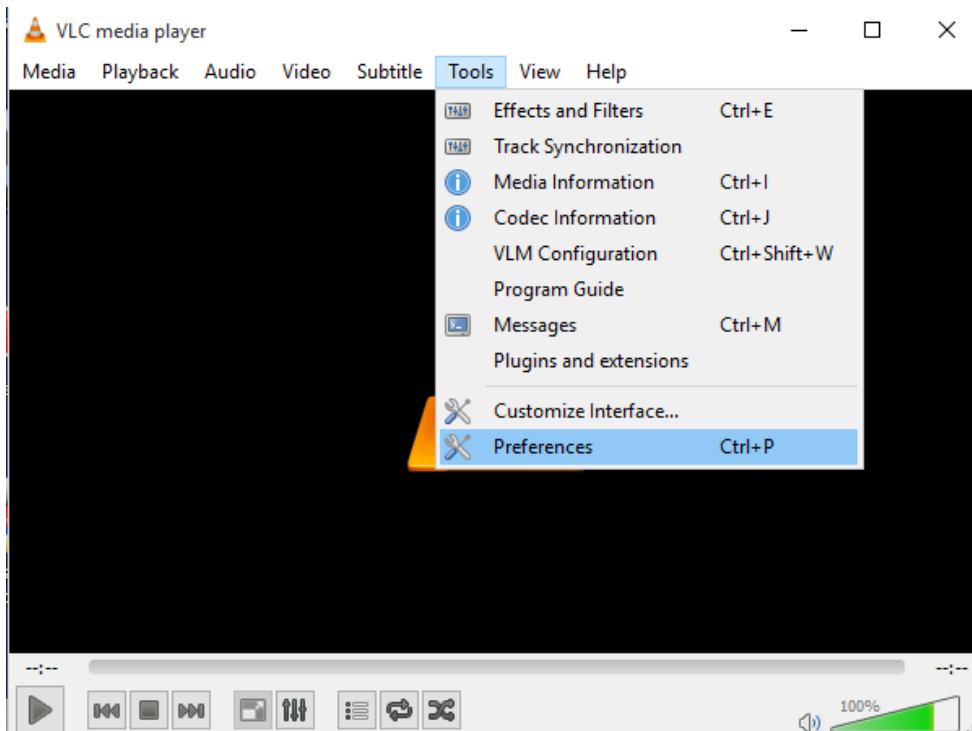
Recording a Network Stream with VLC Player

To Record with VLC Windows

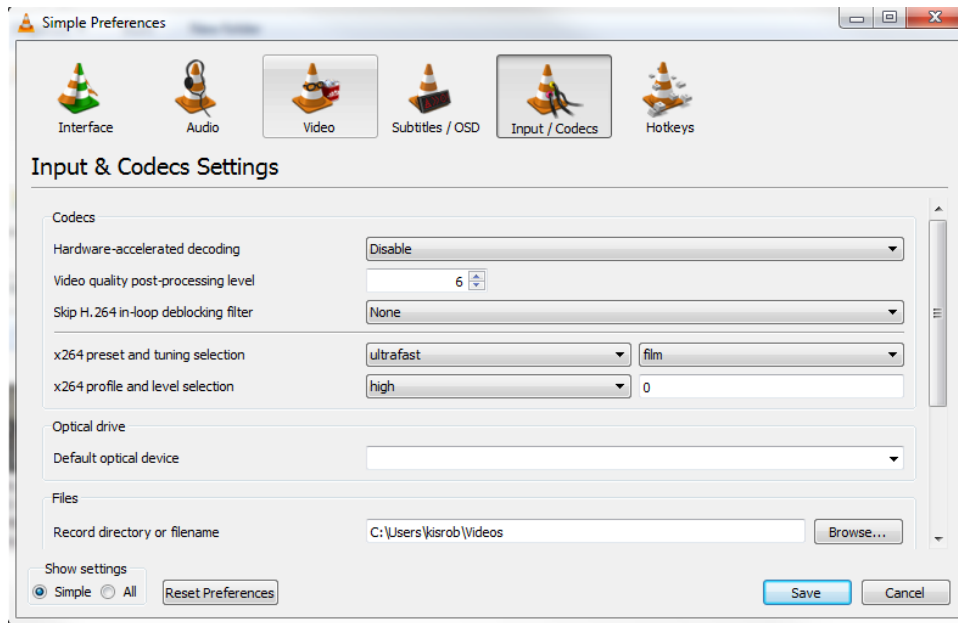
1. Open VLC Player



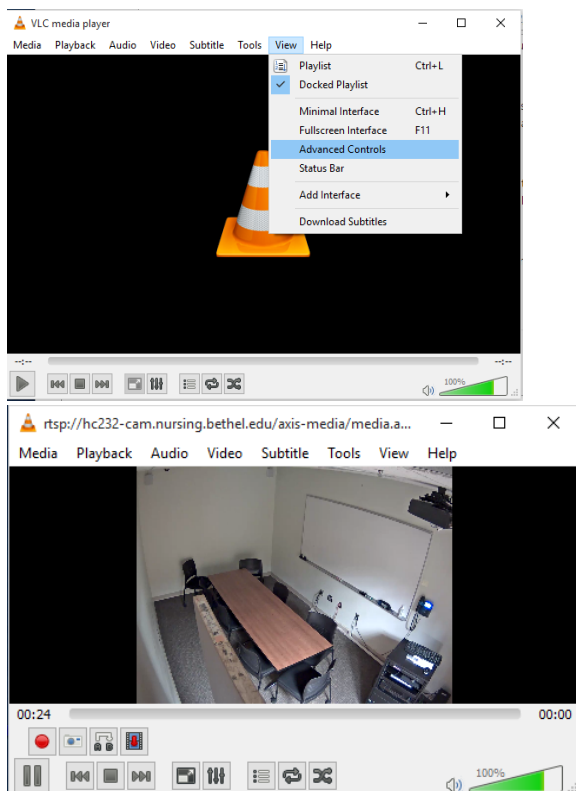
2. Set the recording location
 - a. In VLC select Preferences from the Tools menu



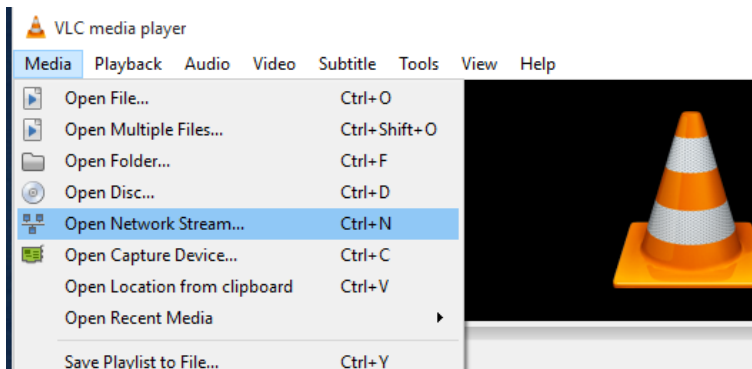
- b. In the Preferences Window, select the Input/Codecs tab. Use the Files > Record directory or filename field and click Browse to find a location to store/record your saved video files. C:\Users\username\Videos or another folder on your drive. (On Bethel systems, seems not to record to Desktop?)
- c. Click the Save button at the bottom of the Input & Codecs Settings window.



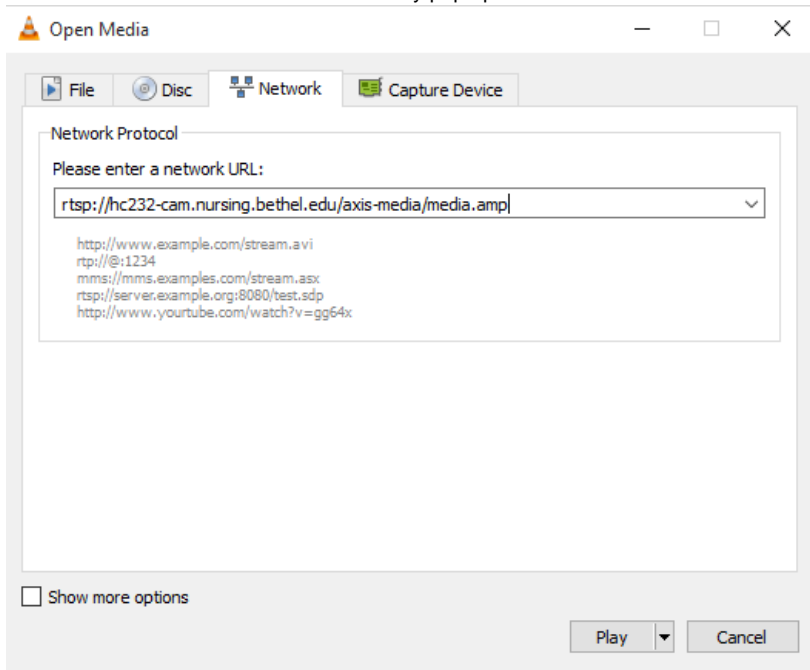
3. Activate the Record Tool: Select the View menu and select Advanced Controls. This will place the record tools on your VLC player window.



4. Access your Network Stream
 - a. Select the Media menu and select Open Network Stream



- b. Enter the address of the network stream in the Please enter a network URL field and click on the Play button in the Open Media window. Note that an authentication box may pop up if access to a network stream is restricted.



5. Record
- a. In the VLC player window click on the red Record button, which will turn blue to signify that recording is enabled.



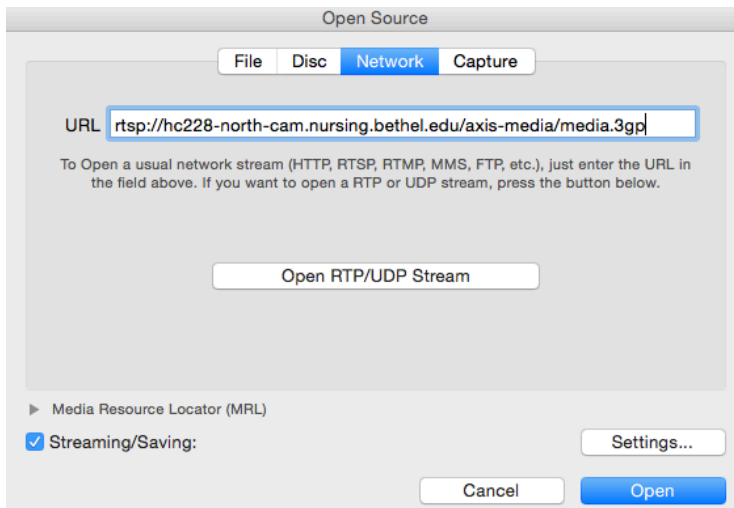
- b. Press the Record button again to stop recording. Recordings are stored in the folder you set in step 2 above.

To Record with VLC (Mac)

File/Media > Open Network

Paste in URL for Multimedia Stream from above

Check Streaming/Saving



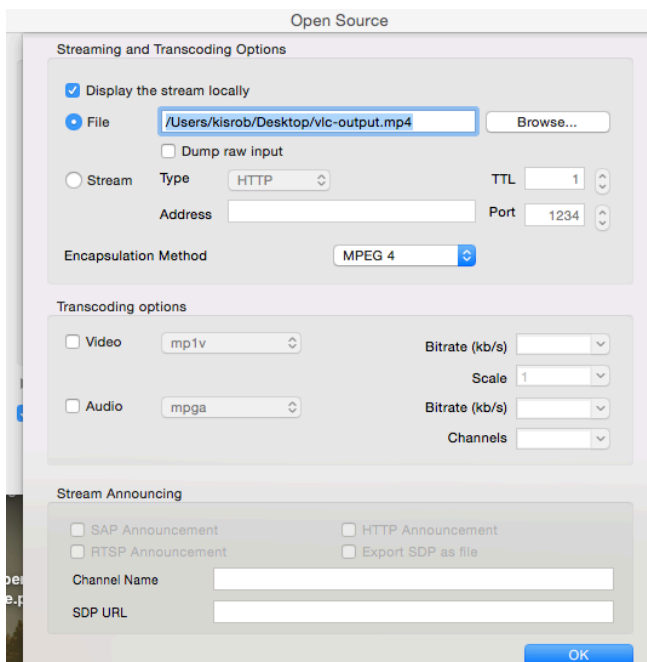
Click Settings

Check Display the stream locally

Check File and browse to where you want to save the file


Encapsulation method set to MPEG 4

Click Okay



Click Open to start, enter username and password for the camera and click okay

RTSP authentication



RTSP authentication
Please enter a valid login name and a password.

User name

Password

Cancel OK

Click the stop button to stop recording.